



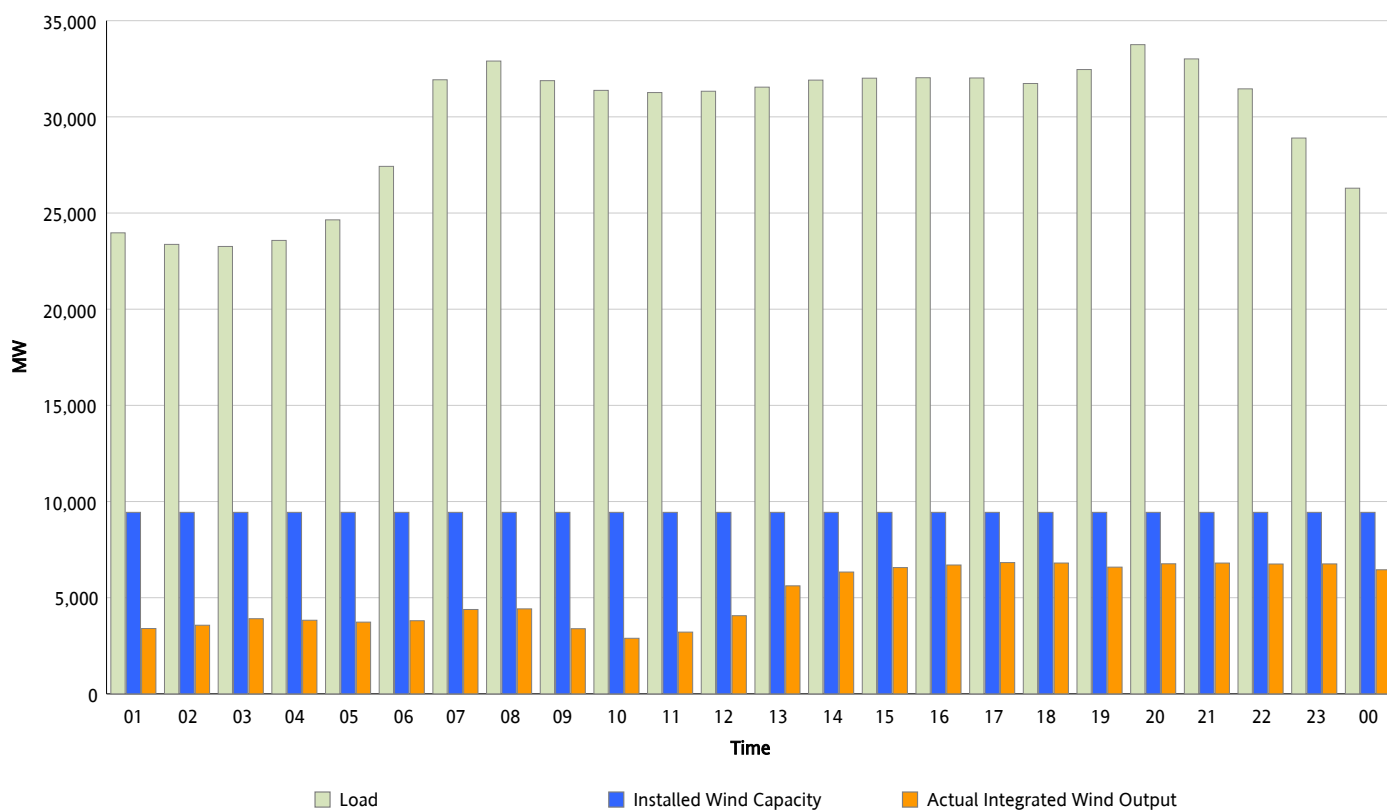
ERCOT Grid Operations

Wind Integration Report : 03/05/2012

Peak Load	33,755 MW
Load Peak Hour (HE)	20
Wind Over Peak	6,763 MW
Wind Record 10/07/11	7,400 MW
Max Wind Value*	7,153 MW
Wind Peak Time	22:06
Wind Integration %	23.96 %

Hourly Average Actual Load vs. Actual Wind Output

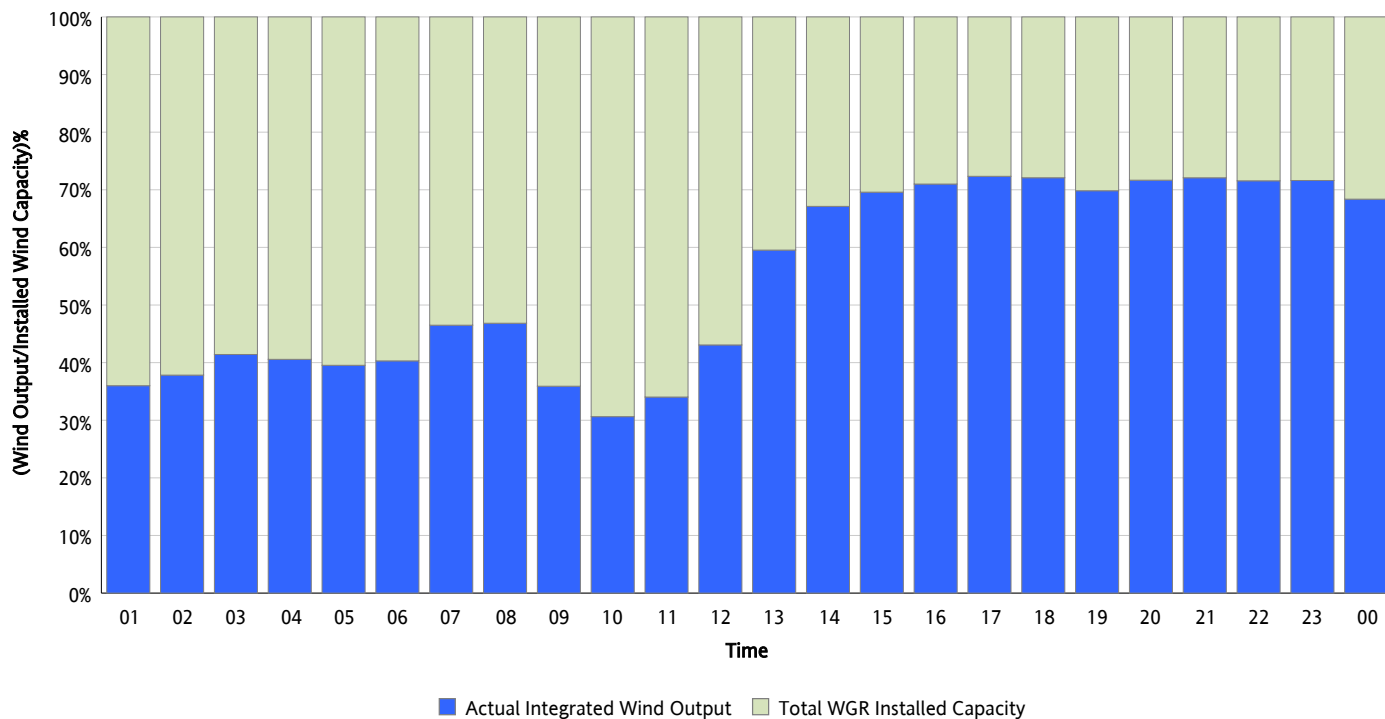
03/05/2012



* Wind Max represents the instantaneous value and the rest of the values are integrated over the hour

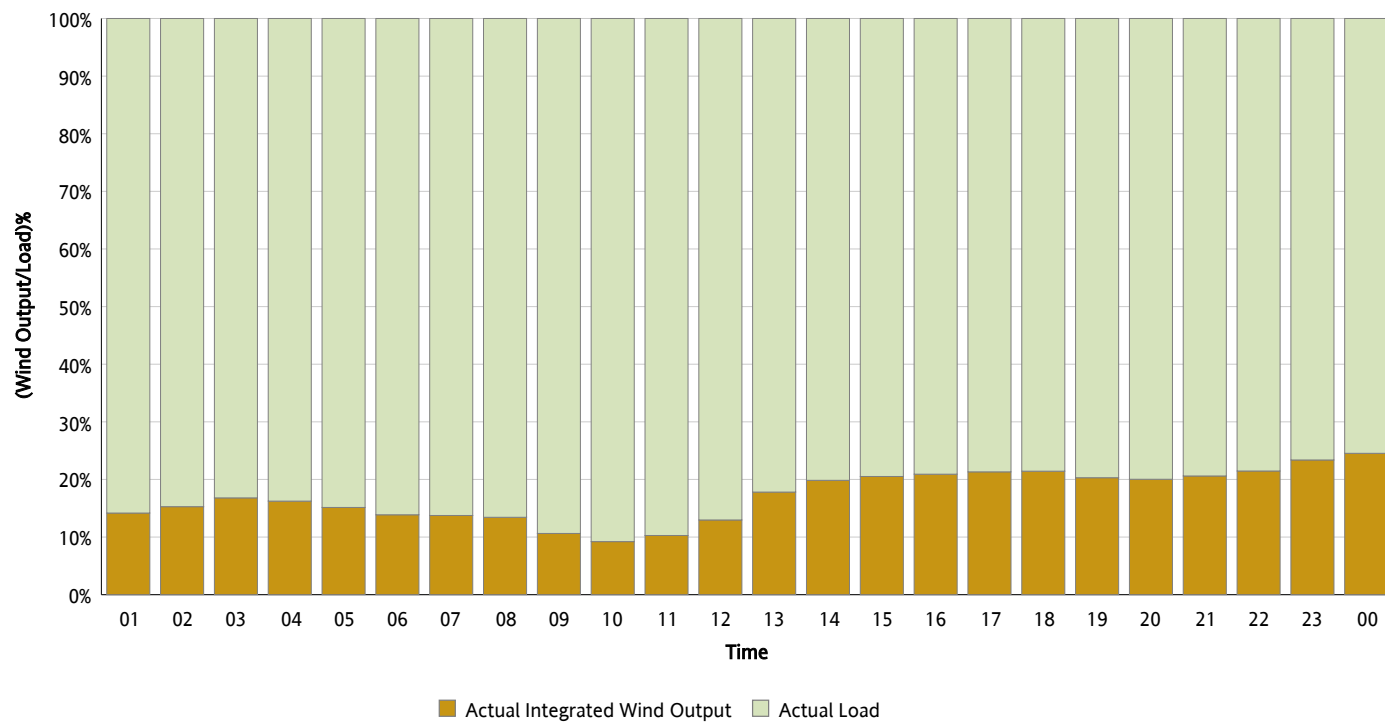
Actual Wind Output as a Percentage of the Total Installed Wind Capacity

03/05/2012



Actual Wind Output as a Percentage of the ERCOT Load

03/05/2012



ERCOT Load vs. Actual Wind Output

02/27/2012 - 03/05/2012

